

# Engaging the next generation of talent



[/epic.see.go/](https://epic.see.go/)  
means: 'to clarify'

Discover YOUR Skills Fingerprint



## Expose

Learning about what careers exist is neither equitable nor comprehensive in the 4th industrial revolution

## Discover

An active exploration of what one wants to "do" through experiences, learning, and relationships. Rarely democratized

## Demonstrate

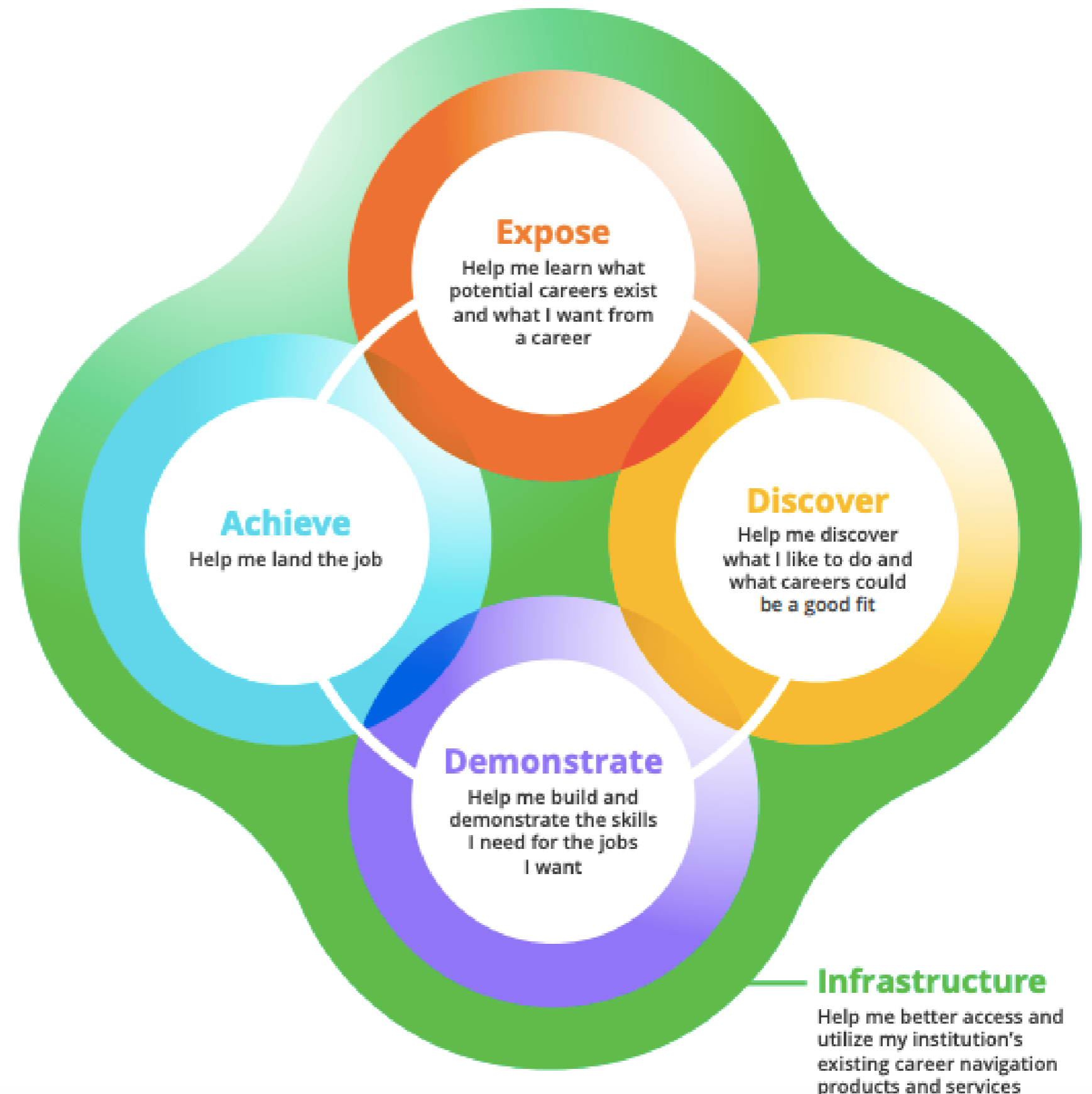
Enormously difficult to translate skills learnt through education and experience to job requirements

## Achieve

Predictive hiring technology 'screens out' applicants from non-traditional backgrounds

# The Career Navigation Cycle

- adapted from, "Unlocking career potential : An analysis of the career Navigation & Guidance product landscape". Entangled Solutions. 2020



# ABOUT EPIXEGO

3 core principles of a student' skills  
development

**01**

**Learning happens everywhere:**  
*inside and outside the  
classroom*

**02**

**Building on a shared language:**  
*articulating skills is critical to  
transferring them to new  
challenges*

**03**

**Discovering near-peer role  
models:**  
*based on skills, interests and  
competencies, NOT zipcode*



# YOUR UNIQUE SKILLS FINGERPRINT

**01**

Articulate your interests and activities, unlike a marketing document (resume)

**Discover** yourself

**02**

Discover near-peer role models with similar skills fingerprint and their careers

Be **Exposed** to careers where you may be a good fit

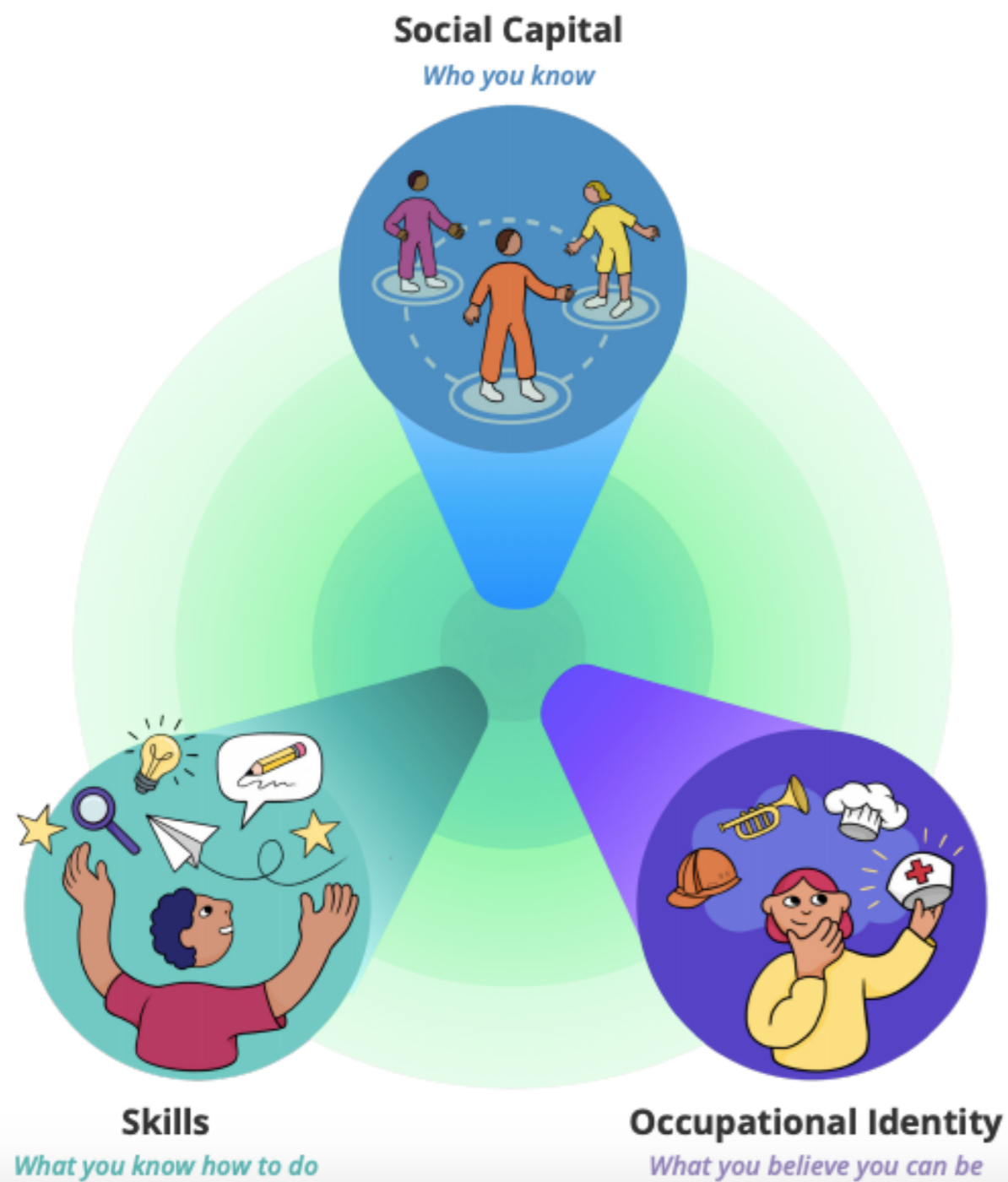
**03**

Connect with the role models you want to. Find experiences to translate your skills

Confidently **Demonstrate** your skills for success

# Three Pillars of Career

- adapted from, "Unlocking career potential : An analysis of the career Navigation & Guidance product landscape". Entangled Solutions. 2020



## EMPOWERING EVERY STUDENT WITH

**Skills:** What you know how to do

*Articulating and visualizing your holistic skills and learning*

**Social Capital:** Who you know

*Discover near-peer role models with a similar skills fingerprint and connect with them*

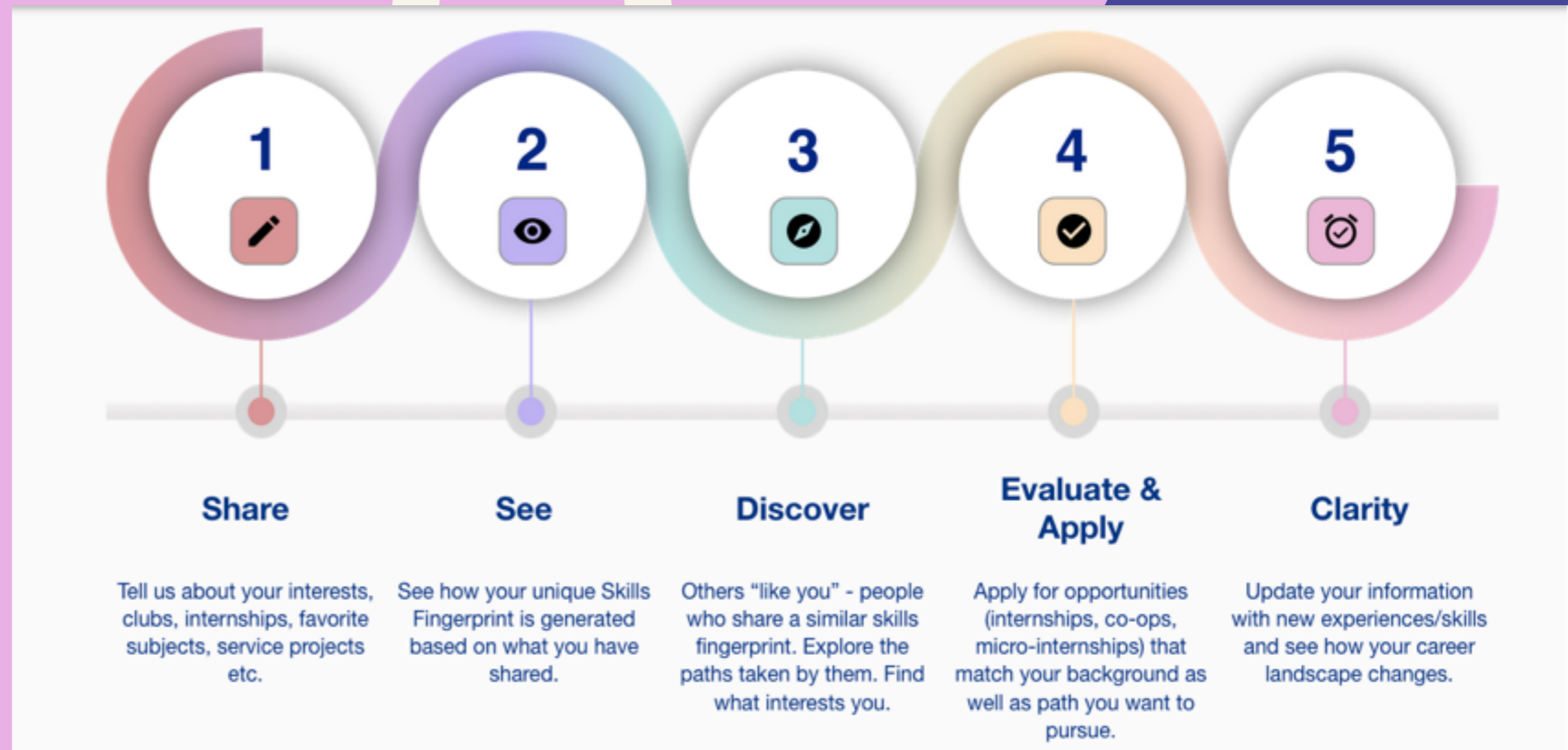
**Occupational Identity:** What you believe you can be

*Connecting skills and social capital to accrued experiences*

You have taken the first step towards a post secondary education  
Let Epixego unlock the pillars necessary for your distinctive career pathway



# HOW DOES IT WORK



[Demo Video](#)



WOMEN IN TECH INITIATIVE  
UNIVERSITY OF CALIFORNIA



Next Generation First Generation™

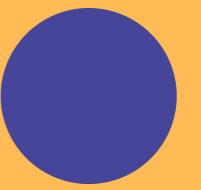


# PARTNERS AND PILOTS

Case Study

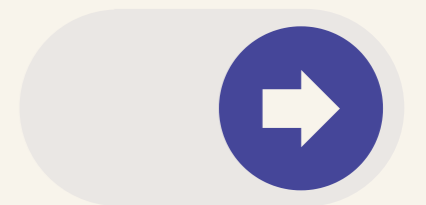


# COLLABORATE WITH US



Be part of technology innovation aimed at democratizing the education-to-career pathway

Interested in a pilot with Epixego to uncover how career discovery, mentoring and alumni relationship can be strengthened for your students?







**ANITA BALARAMAN**

CEO & Founder  
Educator | Technologist



# THE TEAM



**SURAKSHA VIDYARTHI**

Co-founder & CPO



**VENKATA RANGAVAJJHALA**

Co-founder & CTO



**ALOK JANI**

Co-founder & VP Engineering





# CONTACT US

510.220.4476

[contact@epixego.com](mailto:contact@epixego.com)

[www.epixego.com](http://www.epixego.com)

